

EYE LEARN

When learning tricky tasks, it is important to have an example to compare yourself to.

Eye Learn offers a web interface that allows you to compare your performance with an expert to learn the work more quickly and efficiently.

“Learn through your eyes”

TEAM MEMBERS

1. Quentin Meteier, PhD in Computer Science
2. Debora Mulliqi, Master in Law
3. Vera Mohr, Master in Neuroscience
4. Hamza Karime, Master in Engineering

1 Who are your clients?

Companies training employees :

- Manufacturing
 - Factory
 - Electronics
- Pharmaceutical

2 How do you make money?

- Licence for using the interface
 - Tier-Pricing
- On-off service:
 - daily training program, consulting for AI model training, after sale
- Others services : video editing/clips

3 What gives you credibility?

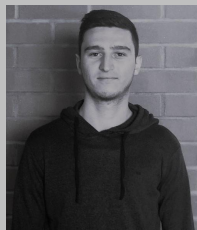
- Proof of concept
- Knowledge background in AI



Next steps

1. What are you going to do in next 6 months
 - More interviews to refine the market.
 - Find problems companies are facing in teaching their employees.
2. HR needed after the training
 - At the beginning 2 people and each year one person is added.
3. What kind of support that you are looking for:
Further training / coaching / funding
 - Coaching

1



2



3



4

