

PROJECTS

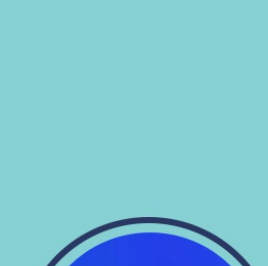
SPRING 2016

LAUSANNE

IronMate

By Chiara Masellis and Daniela Trogolo, PhD at EPFL
IronMate is a portable device to monitor anaemia and is addressed to pharmacists and medical doctors to quickly test patents in their office but also to anaemic people to test themselves at home without sending the sample to a laboratory

Team: Ijaz Anwar PhD at UNIL



FLOWBONE

By Claire Delabarde, PhD at EPFL

Gel with mineral particles for bone regeneration enhancement and infection control dedicated to general dentists, implantologists, parodontists, oral and maxillofacial surgeons

Team: Qifan Zhang MSc EPFL, Joel Fardel, MSc UNIL, Joel Da Palma PhD UNIL



Xsensio

By David Haldimann, MSc UNIL

A tiny nano sensor system which can eventually track electrolytes and other relevant health information based on a sweat test. Contrary to traditional blood tests, it is non-invasive and continuous since humans produce sweat in little quantities around the clock.

Team: John Jost Postdoc EPFL, Lee Köppel BSc EHL



FURMI

By Andreas Schwab, BSc HES-SO

URMI provides accurate data analysis and feedback designed to optimize public infrastructure. Using data collected by users of the F URMI app, competitor apps and mobile network providers will generate quantitative and qualitative data helping cities and urban planners to target their investments, making soft mobility more attractive.

Team: Mathieu Palmis MSc UNIL and Pauline Itty EPFL



VR seats

By Jonas Haider and Gabriel Sonderegger, other

VR seats allows people to attend concerts live or retransmitted through an app and using VR technologies such as oculus rift.

Team: Nina Zargari and Hugo Meley PhD EPFL



Clickfunding

By Thibault Patrouillat, Master at UNIL

Clickfunding, a new way to finance projects. We want to offer to people a new way of helping, where everyone can make a difference by giving few seconds of their time

Team: Hassan Helbawi MSc UNIL and Marc Perez MSc UNIL

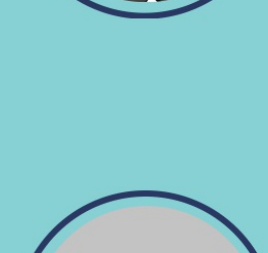


B-edgy

By Romina Choun, Master at UNIL

B-Edgy provides a "Fashion Intelligence System" from big data on shoppers and other industry sources. Our approach is bottom-up. We gather and build proprietary shopper data by offering free services to consumers as their online fashion consultant.

Team: Eichenberger BSc HES-SO and Giorgio Rinaldi PhD EPFL



Smart Patch

By Pauline Itty EPFL and Marina Shkapina MA UNIL

Smart Patch is an innovative Swiss start-up developing a patch to help people control their weight. Spin-off from the CSEM (Neuchatel), Smart Patch is a platform, which provides accurate data analysis and feedback thanks to the data sent by the sensors in the patch itself.



MARLIS

By Jakub Bialek, Postdoc at EPFL

MARLIS uses LIDAR technology gives a 3D map of atmospheric composition, spans a wider area than other tools and is more robust (less maintenance)

Team: Leyla Loued-Khenissi PhD EPFL and Carlos Macias Romero Postdoc EPFL



Axiozon

By Georgios Lilis, PhD at EPFL

We provide to customers who want to easily make their home smart, a plug-and-play platform to connect different smart electronics in a single interface and achieve automatic comfort improvement based on user behavior

Team: Isabelle Veronis BSc EPFL, Martial Sankar UNIL, Qiuliyang Yu PhD EPFL, Arjeta Rahmani BSc HES-SO

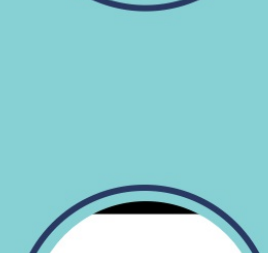


Locaball

By Gaspard Chevassus, Master at EPFL

A golf ball with a tiny bluetooth chip embedded inside. The player pairs his golf ball with his smartphone which will allow him to find it after. The free app developed will give the possibility to retrieve the ball within a distance of 50 meters

Team: Arianna Grandi MSc UNIL and Paul Coulerie Postdoc UNIGE



USHOP

By Yujie Zeng, Bachelor at EHL

USHOP offer an all-in-one package for independent shops to facilitate online marketing through words of mouth, by engaging with customers at low cost

Team: Imène Henaoui PhD EPFL, Martin Boudet BSc UNIL, Douglas Finazzi MSc UNIL



SmartFolyo

By Guilhem Tardy, Master at UNIL

SmartFolyo aims to provide automated and independent investment advice to all. The emphasis is on simplicity of use, asset preservation and a stable income.

Team: Amin Mudaqiq MSc UNIL



SystemsMESH

By Mostafa Khosrownejad and Mohammad Abedini, EPFL

We developed the science and a disruptive new technology for model-based development which bridges two fundamental gaps. It brings together modelling of the physical systems and cyber systems which enable non-IT engineers who are the main working force of IIoT.



Emilia Sports

By Bastien Rojanwisut, Master at EPFL

Mobile-friendly online application that is a one-stop shop for sports clubs. The application handles membership administration at the click of a button, and offers the convenience of being able to share information amongst members through its own online portal.



GENEVA

SynApps

By Raphaël Thézé, PhD at UNIGE

SynApps is a complete library of digitalized psychological and cognitive tests. It has increased validity, intuitive data management and is designed to be user-friendly.

Team: Leonard Truscello BSc UNIGE, Athanasios Topaloudis CERN, Luca Jacopo Bardazzi MSc

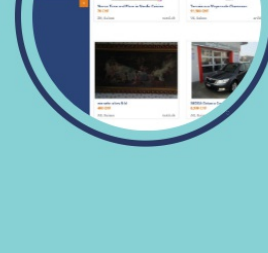


Data Science Consultancy

By Leanne Guy, PhD at UNIGE

SynApps is a complete library of digitalized psychological and cognitive tests. It has increased validity, intuitive data management and is designed to be user-friendly.

Team: Marcello Mortillaro Scientist UNIGE, Giuseppe Balocchi Professor UNIL, Giuseppe Randazzo Postdoc UNIGE, Lorenzo Rimoldini scientist at UNIGE

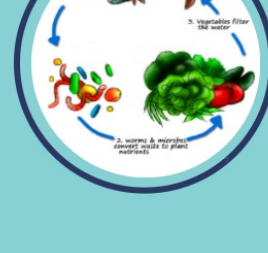


Scrapeo

By Charles Delort, Collaborator at CERN

Online website for pre-owned luxury retail.

Team: Jordan Doytchinov CERN and Paulin Dadjeu PhD UNIL



KiOp

By Thomas Strgar, HEPIA

We developed a system allowing the surgeon to interact with these images with simple hand gestures using a gesture recognition camera. The system is simple to use, fast, intuitive, low cost and respect the aseptic conditions of the operating room

Team: Oday Darwich MSc UNIGE, Manish Sharma PhD UNIGE and Veronique Orsat MSc UNIGE



Extensible Aquaponic Modules

By Carlos Javier Rivera, PhD at UNIGE

This modular production of fish protein and of vegetables enables the community to grow and develop new section of the local, small farming industry, and also bring to it variety and stability thanks to its network shape, in contrast to large-scale fish farms

Team: Elie Gauthier MSc UNINE, Daniel Foguelman PhD CERN, Lukas Welker MSc UNIGE and Peter Strassmann PhD UNIGE



Active Wearable

By Simone Gallo and Giulio Rognini, PhD at EPFL

Wearable devices able to both record multimodal information (limb movement, breathing, heartbeat, etc.) AND provide a multimodal tactile stimulation (pressure, skin stretch, temperature and vibration) from/to the user simultaneously.

Team: Swann Pichon Postdoc at UNIGE and Donald Glowinski Postdoc at HES-SO

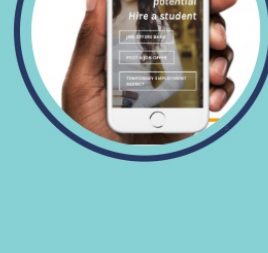


PAVY

By Bojja Aditya Reddy, PhD at UNIGE

It measures in a real-time the UV exposure and the melanin content in the skin in order to provide a personalized approach to your sun exposure limit! This patch is thin, flexible, biocompatible, disposable.

Team: Piotr Nikiel CERN, Yuri Ermoline CERN and Viktorija Herceg PhD at UNIGE



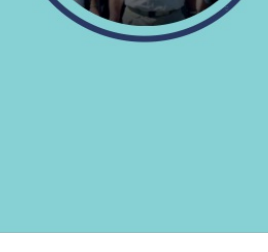
NEUCHÂTEL

ScenaRisk

By David Ardia, assistant professor at UNINE

ScenaRisk is an additional layer that can be plugged to any risk application, and which allows automatic and more realistic stress-test generation. It relies on the entropy approach.

Team: Yann Brouet Postdoc at UNIBE, Miguel Angel Ribot PhD EPFL, Jacqueline Shoukry MSc UNINE and Milad Ataeei PhD EPFL



FindYourMeal

By Vincenzo Capuano, PhD at EPFL

FINDYOURMEAL is your personal digital assistant, who provides you smart solutions for your meal if you want to cook at home, get a meal delivered at home or go to a restaurant.

Team: Lionel Schaler MSc UNINE, Huaiqi Huang PhD EPFL and Saeed Ghamari PhD EPFL

Hire a student

By Maude Schmidt, Master at UNINE

An online platform enriched with temporary employment services specialized in student employment. Unlock your potential: Hire a student!

Team: Gwendoline Fox Postdoc UNINE, Valérie Houangni PhD UNINE and David Hodel MSc UNINE

HITET

By Mathieu Demenge, Master at UNIL

An online platform providing live streams of webcams in bars and nightclub. This allows people to check beforehand the atmosphere.

Team: Vanessa Hänni, Bachelor at HE-ARC

BloPreMo

By Maxim Gaponenko, Postdoc at UNINE and Christos Edward Athanasiou, PhD at EPFL

A device that has the ability to measure blood pressure, heart rate and body temperature simultaneously over large intervals of time (>48 hours,) with data logging and data transfer functionalities.

